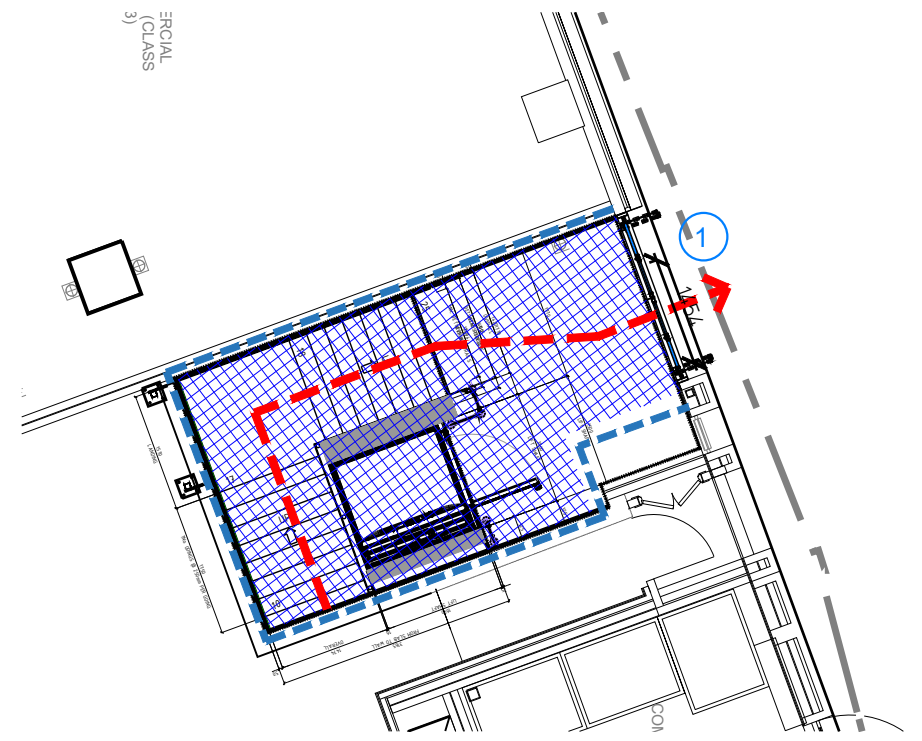
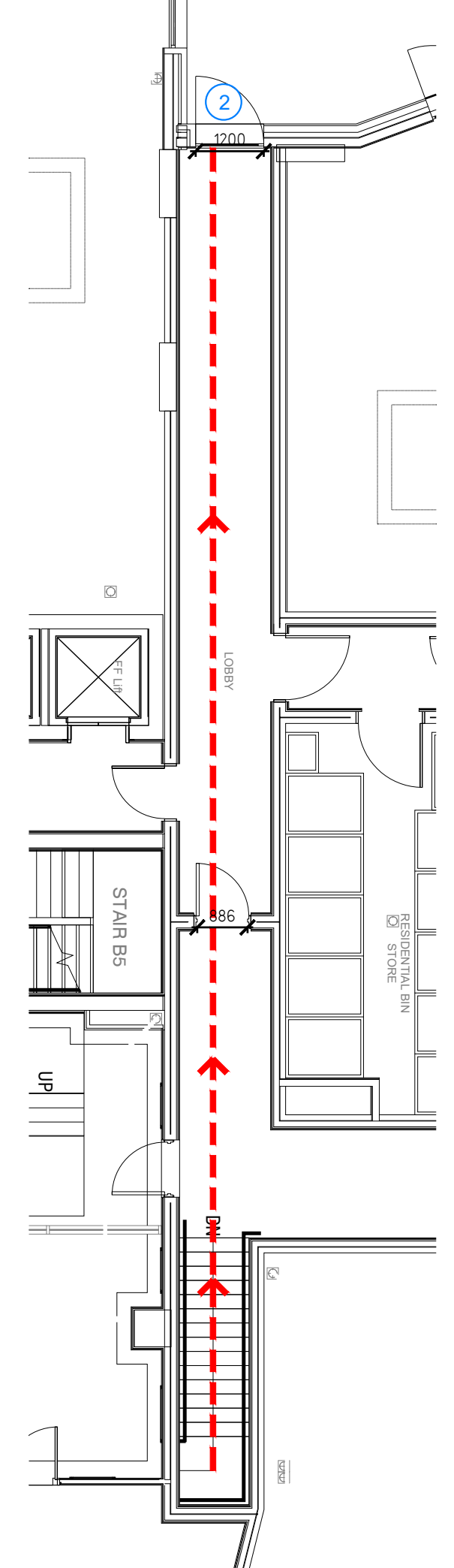


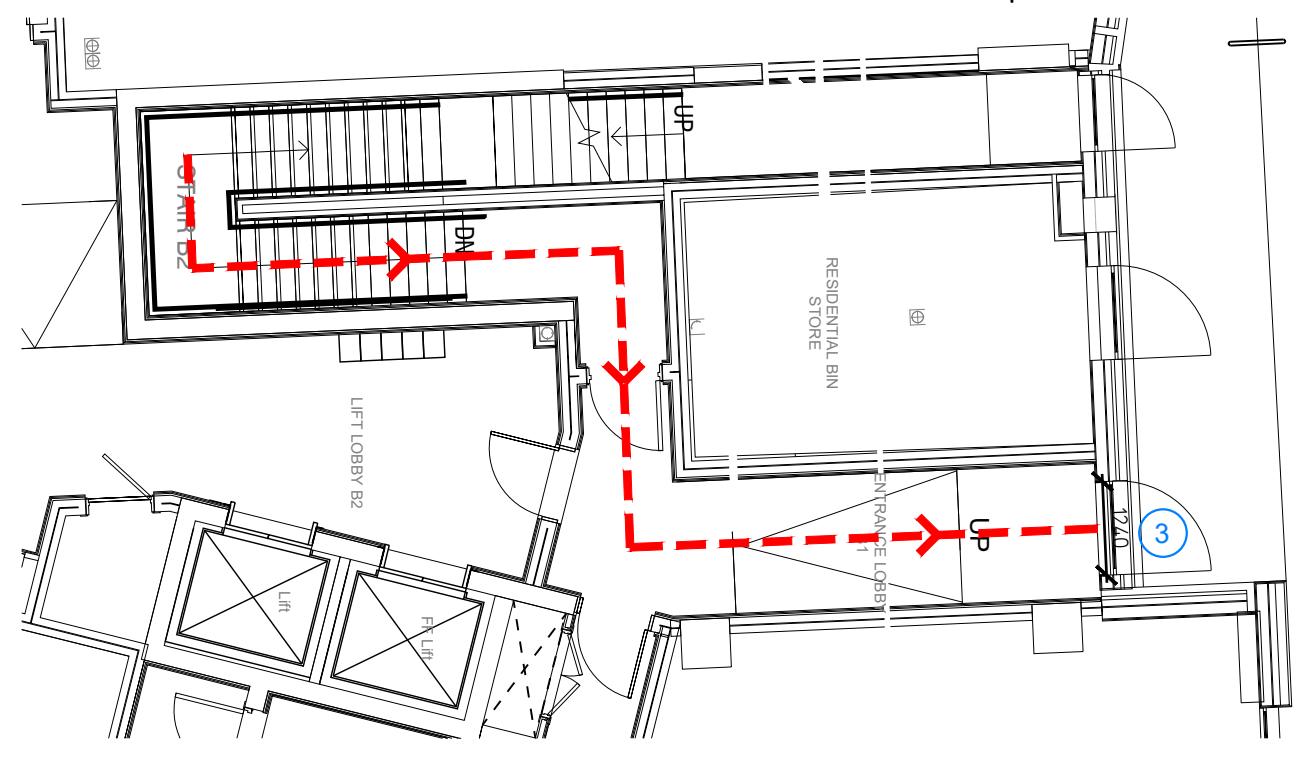
NOTE:
 - Proposals must comply with all acoustic, fire & building regulation requirements
 - No dimensions are to be scaled from this drawing. The contractor is responsible for checking all dimensions on site



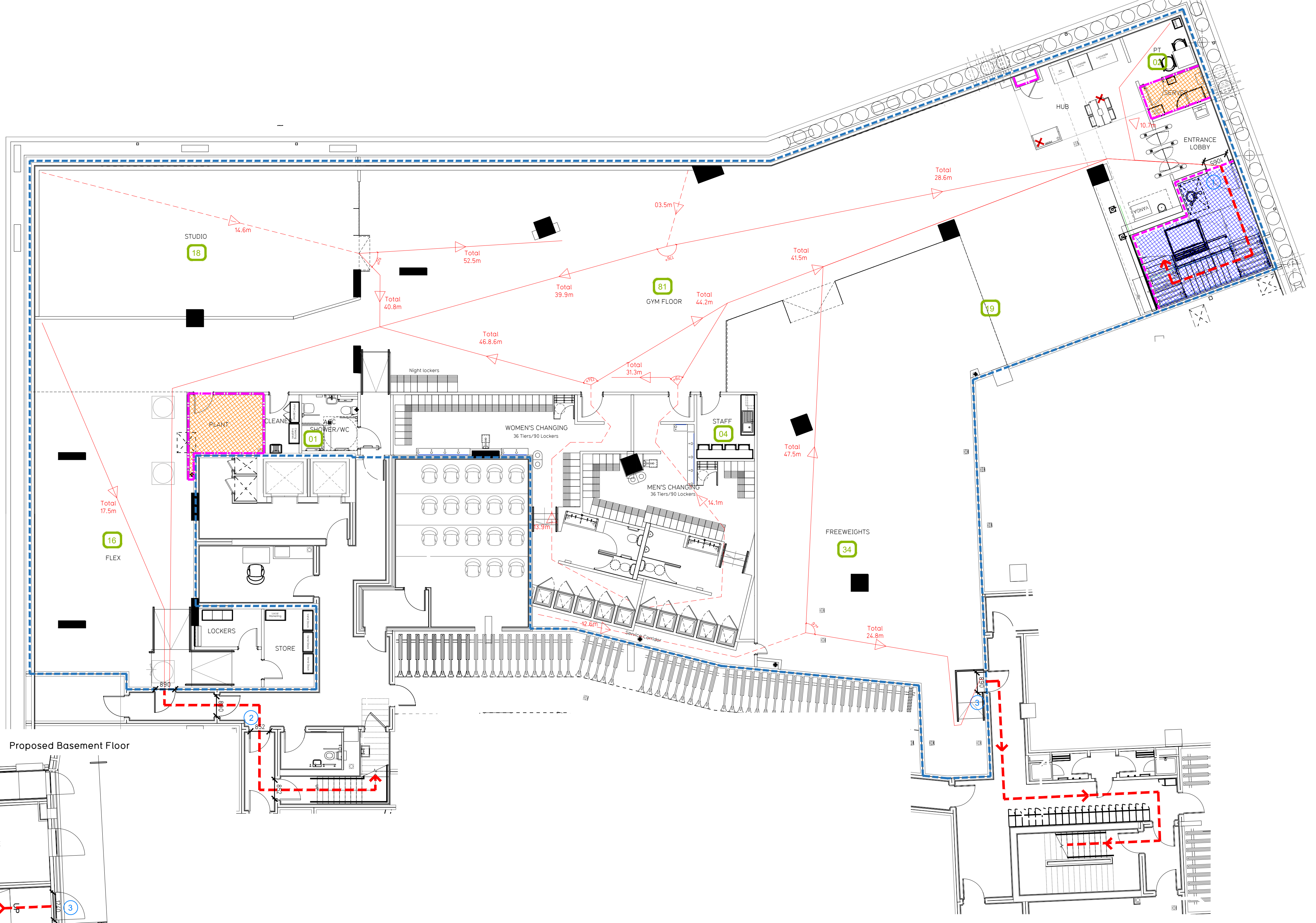
Proposed Ground Floor



Ground Floor



Proposed Basement Floor



Fire Evacuation Key

	Existing wall to achieve min 30 minute fire rating (suitability of wall to be confirmed on site by Pure Gym Main Contractor)		Occupancy level within area
	Existing wall to achieve min 90 minute fire rating. Compartment wall has been designed and constructed by LL to meet their building fire strategy. All new penetrations to comply with fire strategy		Fire Escape Route
	New wall to achieve min of 30min fire rating		Minimum Clear Widths
	New wall to achieve min of 60min fire rating		Exit No.
	Protected areas: walls, floors, ceilings and doors to achieve 30minute fire resistant construction.		Shared Escape Route
	Protected areas: Stair structure walls, floors, ceilings and doors to achieve 60minute fire resistant construction, within the demise. Penetrations through demise to be fire stopped to 90mins.		

Escape Route Widths:
 In line with Sections 3.21 & 3.22 of 'Approved Document Part B, Volume 2 - buildings other than dwellings' and the Building Fire Strategy assessment under BS5839-3 - the adjacent calculations provide justification for the clear opening widths for escape from each floor level/ room in accordance with Table 4 & Appendix C.

Basement Floor
 Exit 1 Clear Opening Width = 105mm (Largest opening to be discounted)
 Exit 2 Clear Opening Width = 802mm (allows 10 persons to escape)
 Exit 3 Clear Opening Width = 890mm (allows 10 persons to escape)

Total Aggregate Width for Floor (Less Largest Opening Width of 105mm from EXIT 1) = 1742mm
 Basement Floor Total Estimated Occupancy Capacity >20 Persons when assessed under 'Approved Document Part B, Volume 2 - buildings other than dwellings'

The unit is within a fire engineered building including sprinklers, the report prepared by H&H Fire ref: HHF_JUR3867_FS_201-23 states the unit as designed at L.L.P.C has an occupancy of 432 if a minimum of 3 axes of combined width 1624mm, after the final largest exit is discounted, is achieved. This strategy has been adopted by the tenant and fire strategy issued to the main contractor for fit out works. All escape routes outside the PureGym demise have been designed by the LLOs per their approved fire strategy.

Sprinklers
 System design and installed in compliance with BS EN 12845:2015 & LPC Technical Bulletins

Fire Alarm
 Fire alarm designed and installed to BS 5839- minimum category M. Smoke & heat detection emergency lighting by specialist. Please refer to M&E engineer's drawings / specifications/ building fire strategy.

Escape signage and emergency lighting within the demised unit CDP under the M&E specification. Details of contractors proposals to be provided to Building Control Approved Inspector and Fire Officer within the Contractors Proposals Package, Clause 1.4

Smoke Extract System, to be designed and installed in accordance with BS 7243: Part 8, and building fire strategy Please refer to M&E Engineer's drawings for final layout and specification. Secondary supply as provided by LL in base build.

Rev	Date	Description	DRAWING TITLE	Drawn/ Checked
PROJECT TITLE			London, Hoxton	Fire Evacuation Plan
BLOCK B 97-137 Hackney Road, London, E2 8ET			Basement/Ground Floor	
SK/CD	13.12.21	1:100 @ A1	0426	003-FEP
RECORD				
Pure Gym Ltd Town Centre House The Merrion Centre Leeds LS2 8LY e: architecture@puregym.com t: 0113 285 8787 w: www.puregym.com				